

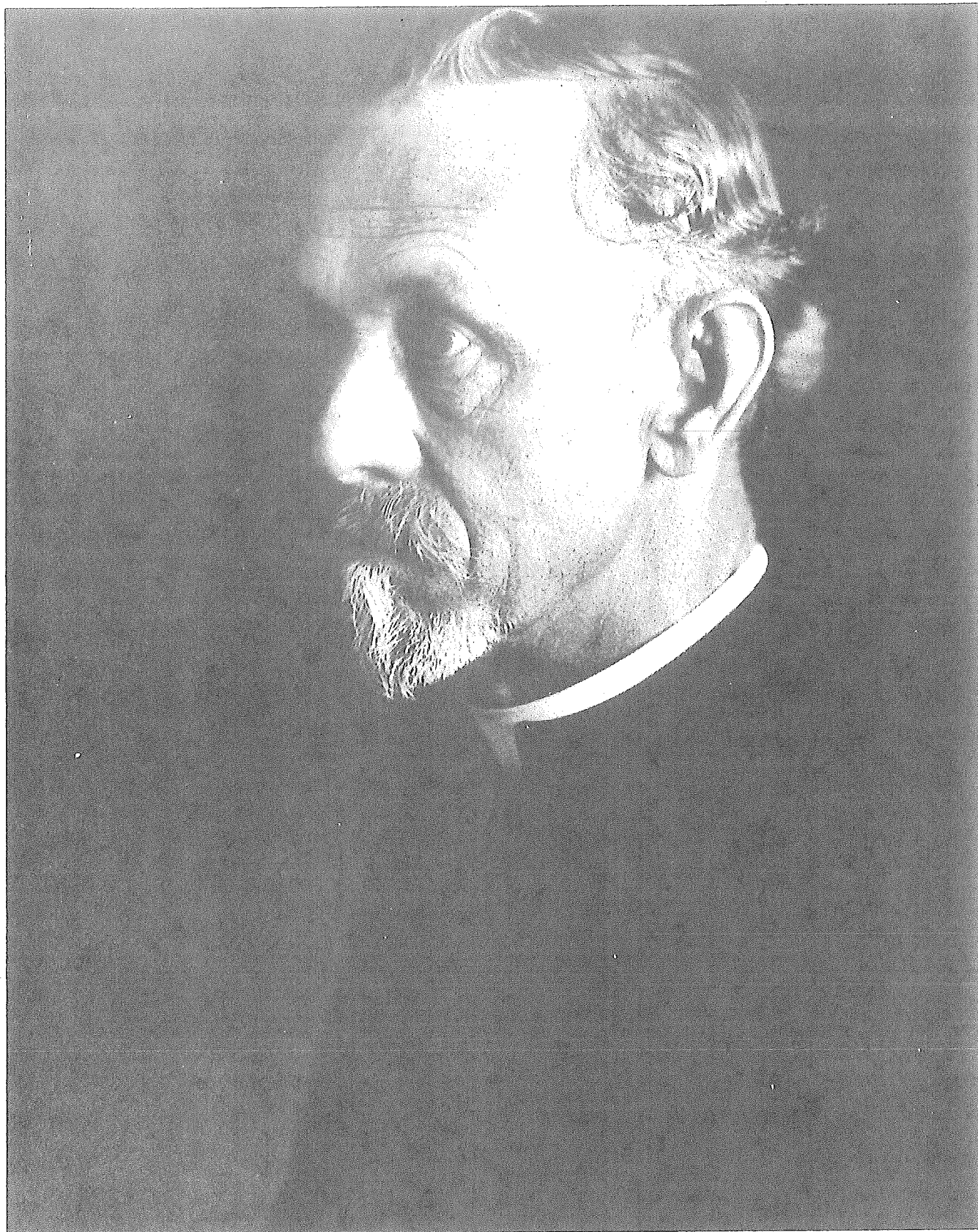
**TWENTY-FIFTH ANNIVERSARY
COMMEMORATIVE VOLUME**

**JESUIT
SEISMOLOGICAL
ASSOCIATION**

1925-1950

EARTH & ATMOS SCIENCES LIBRARY

JESUIT
SEISMOLOGICAL ASSOCIATION



Reverend Frederick Louis Odenbach, S. J.

TWENTY-FIFTH ANNIVERSARY
COMMEMORATIVE VOLUME

JESUIT
SEISMOLOGICAL
ASSOCIATION
1925-1950

JAMES BERNARD MACELWANE
PRIEST OF THE SOCIETY OF JESUS
EDITOR

CENTRAL STATION
SAINT LOUIS UNIVERSITY
1950

Copyright, 1950

By

James B. Macelwane, S. J.

FOREWORD

This volume is dedicated to the commemoration of the Golden Jubilee (1900-1950) of seismological investigations under Jesuit auspices in the United States and Canada and to the Silver Jubilee (1925-1950) of the establishment of the Jesuit Seismological Association. It thus covers two consecutive periods of twenty-five years each in the history of American Jesuit seismology.

The first period begins with the construction in 1900 of a simple seismograph for experimental purposes by Father Frederick L. Odenbach, S. J., and Brother George H. Rueppel, S. J., at John Carroll University, then Saint Ignatius College, in Cleveland, Ohio. This research will be described in the chapter devoted to the Cleveland Seismological Observatory of John Carroll University. During that period most of the Jesuit seismological stations were founded and were for a time united in a Jesuit Seismological Service under the direction of Father Odenbach.

The second period begins with the meeting of official delegates at Loyola University, Chicago, Illinois, August 24, 1925, at which all the seismological stations

under Jesuit auspices in the United States agreed to unite, the name, Jesuit Seismological Association, was adopted and a permanent organization effected. At the same meeting the Central Station of the Jesuit Seismological Association was established at Saint Louis University, both as a research center and as an administrative headquarters under the direction of Father James B. Macelwane, S. J.

The volume is divided into three parts of unequal length. The first part is devoted to a sketch of the history of the Jesuit Seismological Association and its Central Station. The second part comprises a series of chapters describing each of the seismological stations or observatories that have at any time been members of the Jesuit Seismological Service or the Jesuit Seismological Association. The third part contains a list of publications by personnel at any time connected with the Jesuit Seismological Association or its member stations.

It is hoped that the record of past accomplishment may stimulate and encourage the efforts of those on whose shoulders will rest the burden of future development and that at the turn of the century our good mother the Society of Jesus may look back on a glorious work done for the glory of her Lord and Leader.

It is sometimes asked why the membership of the Jesuit Seismological Association was restricted to the United States of America and why it did not embrace such

famous Jesuit observatories as Belen in Cuba, Bogota in Colombia, Cartuja and the Ebro in Spain, Kalocsa in Hungary, Ksara in the Lebanon, La Paz in Bolivia, Manila in the Philippines, Riverview in Australia, Stonyhurst in England, Tananarive in Madagascar and Zikawei in China. The answer is that extensive correspondence with these observatories at the time revealed a general conviction that informal cooperation was preferable to membership because it would leave the Association more free to act as an American organization and would be less open to misunderstanding.

Grateful acknowledgment is hereby tendered to all who have contributed text and illustrations and especially to Miss Margaret Hediger to whom the typography of the volume is largely due.

JAMES BERNARD MACIELWANE, S. J., EDITOR

CONTENTS

	Page
FRONTISPIECE	ii
FOREWORD	v
By James B. Macelwane, S. J.	

PART ONE

THE JESUIT SEISMOLOGICAL ASSOCIATION

Chapter

I	THE FORERUNNER - THE JESUIT SEISMOLOGICAL SERVICE	3
	By James B. Macelwane, S. J.	
II	THE INTERIM	10
	By James B. Macelwane, S. J.	
III	THE JESUIT SEISMOLOGICAL ASSOCIATION	17
	By James B. Macelwane, S. J.	
IV	THE CENTRAL STATION	29
	By James B. Macelwane, S. J.	

PART TWO

JESUIT SEISMOLOGICAL STATIONS IN THE
UNITED STATES AND CANADA

V	HOPES UNREALIZED	41
	By James B. Macelwane, S. J.	
VI	THE CANISIUS COLLEGE STATION, BUFFALO, NEW YORK	42
	By Austin C. McTigue	

VII	THE LOYOLA UNIVERSITY SEISMOLOGICAL STATION, CHICAGO, ILLINOIS	61
	By Alphonse R. Schmitt, S. J.	
VIII	XAVIER UNIVERSITY SEISMOLOGICAL OBSERVATORY, CINCINNATI, OHIO	68
	By Victor G. Stechschulte, S. J.	
IX	JOHN CARROLL UNIVERSITY SEISMOLOGICAL OBSERVATORY, CLEVELAND, OHIO	74
	By Henry F. Birkenhauer, S. J.	
X	REGIS COLLEGE STATION, DENVER, COLORADO	93
	By Joseph V. Downey, S. J. and James B. Macelwane, S. J.	
XI	MARQUETTE UNIVERSITY SEISMOLOGICAL STATION, MILWAUKEE, WISCONSIN	100
	By Joseph F. Carroll, S. J.	
XII	THE SEISMOLOGICAL OBSERVATORY OF LOYOLA UNIVERSITY OF THE SOUTH, NEW ORLEANS, LOUISIANA	110
	By James B. Macelwane, S. J.	
XIII	THE FORDHAM UNIVERSITY STATION, NEW YORK, NEW YORK	119
	By J. Joseph Lynch, S. J.	
XIV	THE SEISMOLOGICAL OBSERVATORY OF SAINT BONIFACE COLLEGE, SAINT BONIFACE, MANITOBA, CANADA	134
	By James B. Macelwane, S. J.	
XV	THE SAINT LOUIS UNIVERSITY STATIONS . .	137
	DUBOURG HALL STATION	
	SAINT LOUIS, MISSOURI.....	137
	FLORISSANT STATION, NEAR	
	FLORISSANT, MISSOURI.....	142
	GYMNASIUM STATION	
	SAINT LOUIS, MISSOURI.....	147
	DEPARTMENT OF GEOPHYSICS.....	153
	LITTLE ROCK STATION	
	LITTLE ROCK, ARKANSAS.....	174
	CAPE GIRARDEAU STATION	
	CAPE GIRARDEAU, MISSOURI....	177
	By James B. Macelwane, S. J.	

- XVI THE SEISMOLOGICAL STATION AT SAINT
MARY'S COLLEGE, SAINT MARYS, KANSAS . . . 181
By James B. Macelwane, S. J.
- XVII THE SEISMOLOGICAL OBSERVATORY AT THE
UNIVERSITY OF SAN FRANCISCO,
SAN FRANCISCO, CALIFORNIA 185
By Alexis I. Mei, S. J.
- XVIII HISTORY OF THE UNIVERSITY OF
SANTA CLARA SEISMOLOGICAL STATION,
SANTA CLARA, CALIFORNIA 191
By Edward Shipsey, S. J.
- XIX THE JESUIT SEISMOLOGICAL ASSOCIATION
STATION AT SPOKANE, WASHINGTON 216
By Francis J. Altman, S. J.
- XX THE SEISMOLOGICAL OBSERVATORY OF
SPRING HILL COLLEGE, SPRING HILL,
MOBILE COUNTY, ALABAMA. 229
By James B. Macelwane, S. J.
- XXI THE GEORGETOWN SEISMOLOGICAL
OBSERVATORY, GEORGETOWN UNIVERSITY,
WASHINGTON, DISTRICT OF COLUMBIA 237
By James B. Macelwane, S. J.
- XXII WESTON SEISMOLOGICAL OBSERVATORY,
WESTON, MASSACHUSETTS 248
By Daniel Linehan, S. J.
- XXIII HOLY CROSS COLLEGE SEISMIC STATION
WORCESTER, MASSACHUSETTS 258
By Daniel Linehan, S. J.

PART THREE

BIBLIOGRAPHY

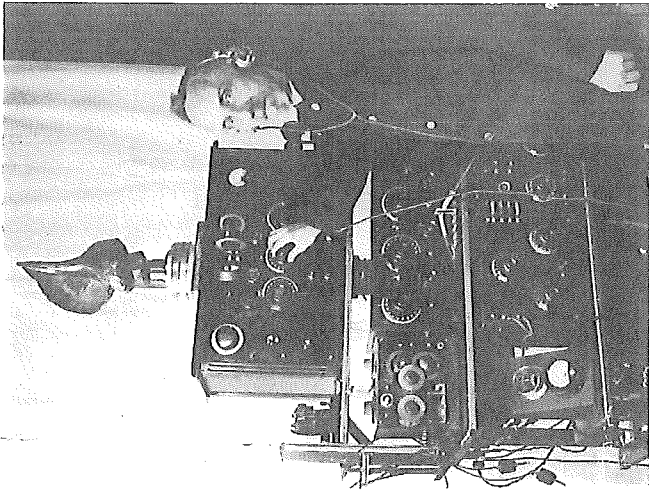
PUBLICATIONS OF ALL THOSE AT ANY TIME CONNECTED
WITH THE JESUIT SEISMOLOGICAL ASSOCIATION STATIONS
IN THE UNITED STATES 265

.....

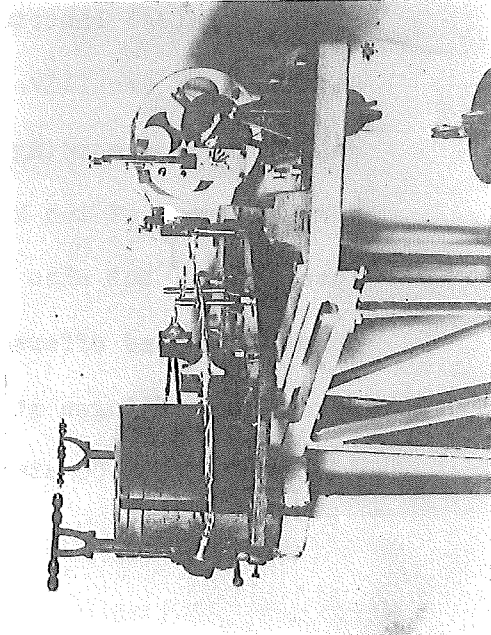
PART ONE

THE JESUIT SEISMOLOGICAL ASSOCIATION

.....



Father Odenbach at His Radio Time Service



The Wiechert 80 Kg. Horizontal Component Seismograph
Used at ALL the Stations

Post Card



Seismic Stations at
Jesuit Colleges in
Georgetown, D. C.
Brooklyn, N. Y.
Fordham, N. Y.
Worcester, Mass.
Buffalo, N. Y.
Cleveland, O. (Central)
Mobile, Ala.
New Orleans, La.
St. Louis, Mo.
Chicago, Ill.
Milwaukee, Wis.
St. Boniface, Manitoba
St. Mary's, Kan.
Denver, Colo.
Santa Clara, Cal.
Spokane, Wash.

Jesuit Seismological Service

CLEVELAND, O., STATION, U. S. A.

ST. IGNATIUS COLLEGE

$\phi = 41^{\circ} 29' 08'' - N$
 $\lambda = 81^{\circ} 42' 29'' - W$

Alt. = 206 M.

Seismic Record No. Date M., 191

COMP.	P ¹		H.		S.		MAIN		END		MAX.		AMOUNT
	H.	M.	S.	H.	M.	S.	H.	M.	S.	H.	M.	S.	
N-S													
E-W													

Time, 90th Meridian. Wiechert 80 Kg., Astatic, Horiz.

Magif. 80.
Period 7.
Damp. 5:1

REMARKS:

REV. F. L. ODENBACH, S. J.

Sample of Report Card Used by the Stations of the
Jesuit Seismological Service